

**Question 2:**

Since the inception of the FISAP to 30 June 1999, the NSW Government has committed \$2.28 million in Business Exit Assistance to Lorry Owner-Driver.

**Question 3:**

PricewaterhouseCoopers is currently in the process of finalising its internal audit of the administration of the FISAP by the Forestry Structural Adjustment Unit (FSAU).

The audit is focusing on key controls in place to ensure compliance with the guidelines and objectives for key programs – Worker Assistance, Industry Development Assistance and Business Exit Assistance.

The auditors have indicated that the overall controls are satisfactory and no significant issues have been identified.

**Question 4:**

The additional \$20 million in NSW funds will extend FISAP for a further 6 years, from 2000 to 2006 to enable the Government to assist workers and businesses in the industry to adjust to resource changes arising from Regional Forest Agreements.

The \$20 million of additional FISAP funds will be used, in the first instance, to meet the Government's on-going commitment to assisting affected timber workers, particularly in providing training to improve their skills and better equip them for the industry of the future. Helping displaced timber workers make the transition to new jobs through training and other forms of assistance will remain as the priority of the Government.

The direction of remaining funds to other elements of the FISAP is dependent upon the Commonwealth resuming its participation in the FISAP. The Commonwealth suspended its involvement in the FISAP in November 1998. This equates to a freeze of approximately \$40 million that had been earmarked for restructuring of the NSW timber industry.

Recently, the Commonwealth Government has indicated its willingness to resume its involvements in FISAP. The NSW Government is currently negotiating with the Commonwealth to resolve outstanding issues as quickly as possible. In the meantime, the NSW Government continues to support restructuring of the native timber industry by continuing to fund those areas of FISAP for which it has primary responsibility.





# Earth Day 2000 Worldwide Campaign

We invite you to join Earth Day 2000, the planet's largest network of environmental activists.

For the first time in history, humans have the power to alter the entire planet. We are changing the climate, triggering an epidemic of extinctions, drilling holes through the ozone layer, reproducing and consuming beyond the world's carrying capacity, and maintaining an arsenal of weapons capable of causing more destruction than an asteroid collision.

Earth Day 2000 will mobilize more than 500 million people around the world in a call to action on critical issues. The goal of Earth Day 2000 is to connect public support for environmental protection with a concrete agenda for action at local, national and international levels.

Already, more than 2900 groups in 164 countries are participating in the Earth Day Network. Together, we will create the largest environmental event in human history, leaving a deep and lasting impact.

Here is a small sampling of events occurring around the world for Earth Day 2000 (see [www.earthday.net](http://www.earthday.net) for more):

- In **Tokyo**, Earth Day Japan will keep busy Tokyo streets free of traffic for a car-free day, and coordinate events across the city's famous Rainbow Bridge.
- In **London**, Fauna and Flora International will sponsor a global conference on biodiversity, hosted by Prince Charles, that will bring together key business leaders and non-governmental organizations (NGOs).
- In **Manila**, Asian NGO Coalition's (ANGOC) huge environmental concert for youth will be broadcast live all over Asia.
- In **Beijing**, Global Village Beijing's massive bicycle rally will mobilize thousands of people.
- In **Mexico City**, Instituto Autónomo de Investigaciones Ecológicas (INAINE) will coordinate tree plantings by 30,000 high school students.
- In **Ghana**, the Environment and Development Association will host a 3-day workshop for women and youth on natural resource conservation.

---

**Join the Earth Day Network by sending us the following information:**

name/nom/nombre \_\_\_\_\_

organization/organisation/organización \_\_\_\_\_

address/adresse/dirección \_\_\_\_\_

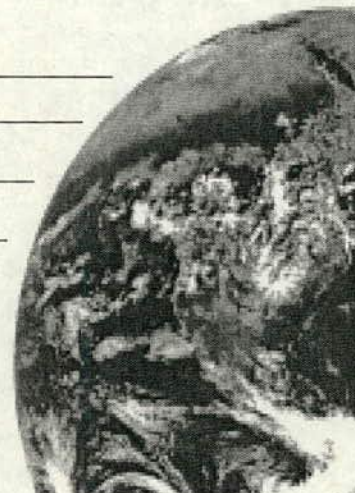
zip code/code postal \_\_\_\_\_ country/pays/país \_\_\_\_\_

telephone/téléphone/teléfono \_\_\_\_\_

fax \_\_\_\_\_

email \_\_\_\_\_ website \_\_\_\_\_

Earth Day Network, 91 Marion Street, Seattle, WA 98104 USA. Tel: (+1 206) 264.0114  
Fax: (+1 206) 682.1184 [worldwide@earthday.net](mailto:worldwide@earthday.net) [www.earthday.net](http://www.earthday.net)







Dear Colleagues,

Greetings from Earth Day Network, the coordinating organisation for Earth Day 2000.

We invite you to join what will be the largest environmental event in human history. In April 2000, 500 million people will participate in Earth Day events. Celebrations will be held in every country on the planet.

Australia features prominently on the world stage, and we hope that many Australian groups and agencies will help make Earth Day 2000 a success. The power of Earth Day is in global, coordinated action in honour of the natural environment. Events range from huge regional and international gatherings, to neighbourhood clean-ups and personal commitments. In April 2000, people all around the world will organise for Earth Day in their own way in their communities, and will learn about environmental issues in other parts of the world.

Earth Day Network coordinates events, directs global attention to critical efforts, and links groups to each other in an international network. Our website ([www.earthday.net](http://www.earthday.net)) features an online calendar of Earth Day events and campaigns, as well as a searchable directory of all groups in the network. The directory links even the most remote activists with their counterparts in every region on the planet. The website also highlights our 30 International Strategic Partners, including WWF's Living Planet Campaign, Friends of the Earth and IUCN.

Serryn Janson will be in Australia from 18-22 October 1999, where she will be coordinating several round table meetings with key Australian leaders. Further details of the meetings are enclosed. For more information, please contact Serryn Janson by email at [sjanson@earthday.net](mailto:sjanson@earthday.net) or fax on +1 206 682 1184.

Half a billion people will participate in Earth Day 2000 events across every country in the world. It is our hope that this amazing mass of citizen support will create a day of awareness of the natural environment that is important to every country's well-being.

Enclosed is some general information and a registration card. Please fill out the card and return it to us. Join the more than 2900 groups in 164 countries which have already become part of this global effort.

We look forward to hearing from you and telling the world what will be happening in Australia for Earth Day 2000.

Yours sincerely,

Denis Hayes  
Founder and Chair

Serryn Janson  
International Network Coordinator

**EARTH DAY 2000  
INTERNATIONAL COUNCIL**

**ANIL AGARWAL**

Director, Centre for Science and Environment, India

**BOB BROWN**

Senator, Australia

**LESTER BROWN**

President, Worldwatch Institute

**GRO HARLEM BRUNDTLAND**

Director General, World Health Organization

**JULIA CARABIAS LILLO**

Natural Resources Secretary, Mexico

**ORONTO DOUGLAS**

Deputy Director, Environmental Rights Action, Nigeria

**WILLIAM DRAYTON**

President & Chair, Ashoka: Innovators for the Public

**MOHAMED EL-ASHRY**

CEO & Chairman, Global Environment Facility

**JOSÉ GOLDEMBERG**

Professor, Instituto de Eletrotécnica e Energia, Brazil

**WAKAKO HIRONAKA**

Member of Parliament, Japan

**PAUL IRWIN**

President, Humane Society International

**ROBERT F. KENNEDY, JR.**

Sen. Attorney, Natural Resources Defense Council, USA

**YOLANDA KAKABADSE**

Minister of Environment, Ecuador  
and President, IUCN

**JONATHAN LASH**

President, World Resources Institute

**WANGARI MAATHAI**

Coordinator, Green Belt Movement, Kenya

**QUEEN NOOR**

Queen Mother, Jordan

**KARL HENRIK ROBERT**

Founder, The Natural Step, Sweden

**NAFIS SADIQ**

Executive Director, UN Population Fund

**EMIL SALIM**

Former Minister of Environment, Indonesia

**MARINA SILVA**

Senator, Brazil

**VANDANA SHIVA**

Director, Research Foundation for Science,  
Technology, and Natural Resources Policy, India

**PETER SELIGMANN**

Chair & CEO, Conservation International

**GUS SPETH**

Former Administrator, UN Development Programme

**MAURICE STRONG**

President, The Earth Council

**DAVID SUZUKI**

Chair, David Suzuki Foundation, Canada

**KLAUS TOEPFER**

Executive Director, UN Environment Programme

**JAKOB VON UEXKULL**

Founder and Chairman, Right Livelihood Foundation, UK

**DOMINIQUE VOYNET**

Minister of Environment, France

**ALEXEY YABLOKOV**

President, Center for Russian Environmental Policy, Russia

**DENIS HAYES**, Chair and CEO

**MARK DUBOIS**, International Coordinator

**SHALINI RAMANATHAN**, International Coordinator



## **EARTH DAY 2000 AUSTRALIAN ROUND TABLE MEETINGS**

Earth Day Network is convening Earth Day 2000 strategy meetings with leading Australian representatives from the following fields during the week commencing 18 October 1999:

- non government organisations (NGOs);
- renewable energy policy;
- government; and
- business.

### **Goals of the Earth Day Australian Round Table Meetings**

The primary goal of the Australian Round Table meetings is to develop a work plan for how Australian groups, institutions and policy makers will use the broad citizen support of Earth Day 2000 to further environmental work in Australia.

In addition, the meetings will focus on how Australian representatives can engage their colleagues in other parts of the Pacific and Asian regions.

### **Schedule of Meetings**

#### NGO Meeting

Australian Conservation Foundation, Sydney  
Wednesday, 20 October 1999, 2.30-4.30pm

#### Renewable Energy

University of New South Wales, Little Bay Solar Research Facility  
Friday, 22 October 1999, 2-4pm

#### Business

Allen Allen & Hemsley, Sydney  
21 October 1999, 9-11am

#### Government

18 and 19 October 1999, Canberra

**For more information**, contact Serryn Janson by email at [sjanson@earthday.net](mailto:sjanson@earthday.net), fax on +1 206 682 1184 or telephone on +1 206 264 0114 (ext 222).



RECEIVED  
21 SEP 1999

BY: \_\_\_\_\_

**NSW  
CRA/RFA  
STEERING  
COMMITTEE**

RESOURCE AND  
CONSERVATION  
DIVISION  
FORESTS TASK FORCE

6 September 1999

## **PRESS RELEASE**

### **Submissions Invited on North East NSW Regional Forest Agreement**

Everyone interested in the future of the North East forests can have a say in the Northern NSW Regional Forest Agreement (RFA).

An information kit *A Regional Forest Agreement for North East NSW* is now on public exhibition, and submissions from the community are being invited.

The Regional Forest Agreement (RFA) for the North East regions of NSW is one of a series of agreements being developed between the Commonwealth and New South Wales Governments on the future use and management of the State's native forests. (The Eden Regional Forest Agreement has recently been signed.)

There will be one Regional Forest Agreement for North East NSW which will cover both the Upper North East (UNE) and Lower North East (LNE) forest regions. It will be for 20 years, subject to five-yearly reviews, and will aim to provide certainty for forest-based industries, conservation and the community. The RFA has three main objectives:

- to protect environmental values in a world class Comprehensive, Adequate and Representative (CAR) Reserve system of national parks and reserves;
- to encourage development in an internationally competitive timber industry; and
- to manage native forests in an ecologically sustainable way.

The Agreement will be based on the results of the recent comprehensive regional assessments of the social, economic, environmental and heritage values of the region's native forests.

The Information Kit includes

- maps of the Upper and Lower North East regions;
- a brochure which outlines key issues for the RFA; and
- a booklet which summarises detailed assessments of the region.

Copies of the kit are widely available throughout the region (list attached) with maps and project reports also on the Internet at <http://www.rfa.gov.au>

Submissions close on Friday October 1 1999.

Contacts: Ruth Dewsbury (C'wealth) 02 6272 3999; Gillian Higginson (NSW) 02 9228 3166



The Information Kit is available at the following sites:

**National Parks and Wildlife Service**

Armidale District Office  
NSW Government Block  
87 Faulkner Street  
**ARMIDALE NSW 2350**  
Ph: 02-6773-7211

Port Macquarie District Office  
152 Horton Street  
**PORT MACQUARIE NSW 2444**  
Ph: 02-6584-2203

Lismore District Office  
Colonial Arcade  
**ALSTONVILLE NSW 2477**  
Ph: 02-6627-0200

Glen Innes District Office  
68 Church Street  
**GLEN INNES NSW 2370**  
Ph: 02-6732-5133

**State Forests of NSW**

Mid North Coast Regional Office  
130 West High Street  
**COFFS HARBOUR NSW 2450**  
Ph: 02-6652-0111

Northern Rivers Regional Office  
Cnr Ellis and Canterbury Streets  
**CASINO NSW 2470**  
Ph: 02-6662-4499

Northern Regional Office  
19E Hill Street  
**WALCHA NSW 2354**  
Ph: 02-6777 2511

Manning Regional Office  
Suite 1/57-61 Albert St  
**TAREE NSW 2430**  
Ph: 02-6551-0074

Gloucester Forest Centre  
4658 Buckets Way  
**GLOUCESTER NSW 2422**  
Ph: 02-6558-1005

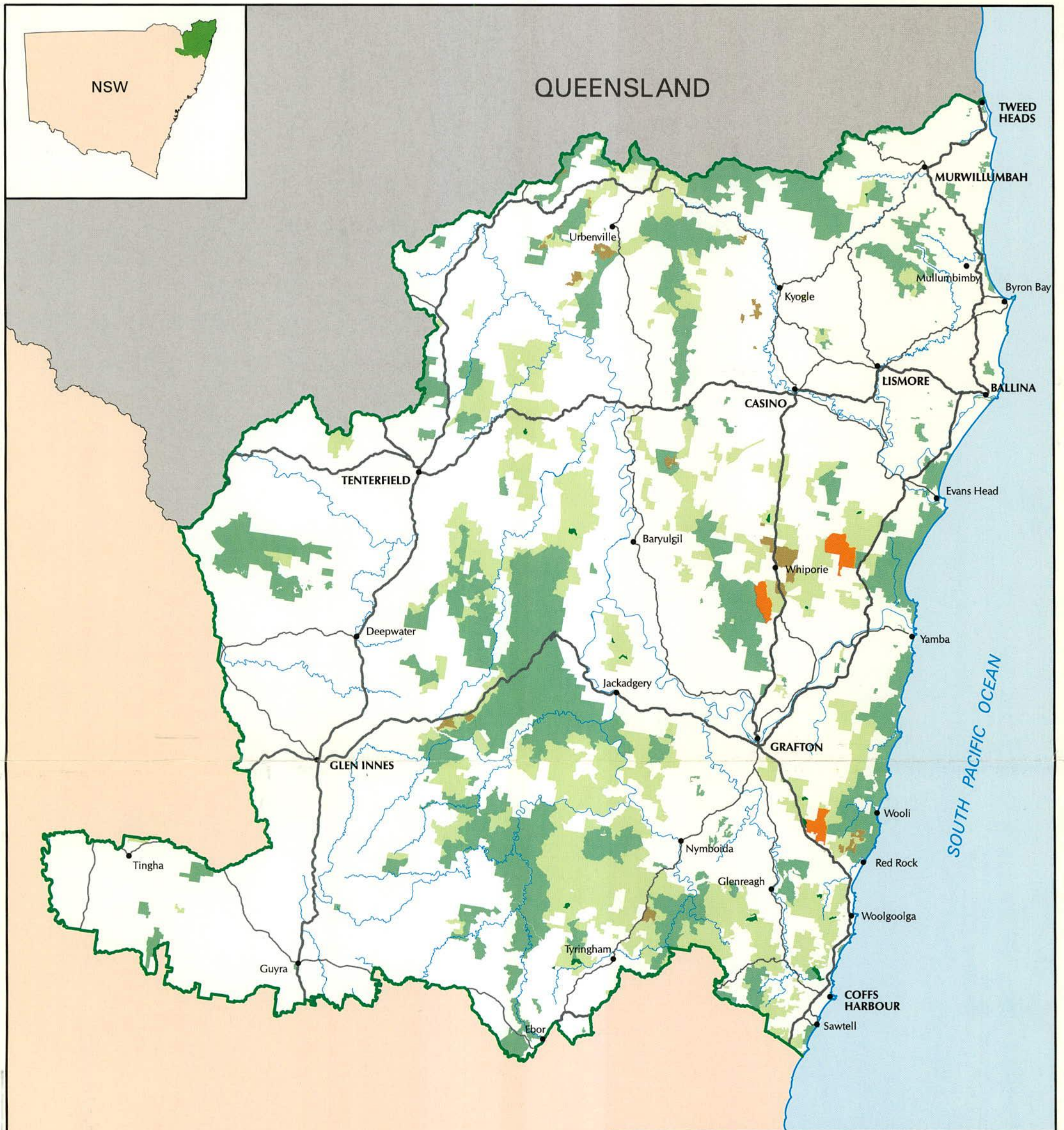
**Department of Urban Affairs and Planning**

Information Centre  
Governor Macquarie Tower  
1 Farrer Place  
**SYDNEY NSW 2000**  
Ph: 02-9391-2018

Hunter Regional Office  
Level 4, 251 Wharf Rd  
**NEWCASTLE NSW 2300**  
Ph: 02-4927-0977

North Coast Regional Office  
49 Victoria Street  
**GRAFTON NSW 2460**  
Ph: 02-6297-6911





# UPPER NORTH EAST REGION

## RESERVES

- National Park / Nature Reserve
- Flora Reserve
- Crown Reserve

## STATE FOREST

- Native Forest and Hardwood Plantation
- Softwood Plantation

- Upper North East Region Boundary
- Major Drainage
- Primary Road
- Secondary Road

This map does not include informal reserves or areas to be reserved by prescription.

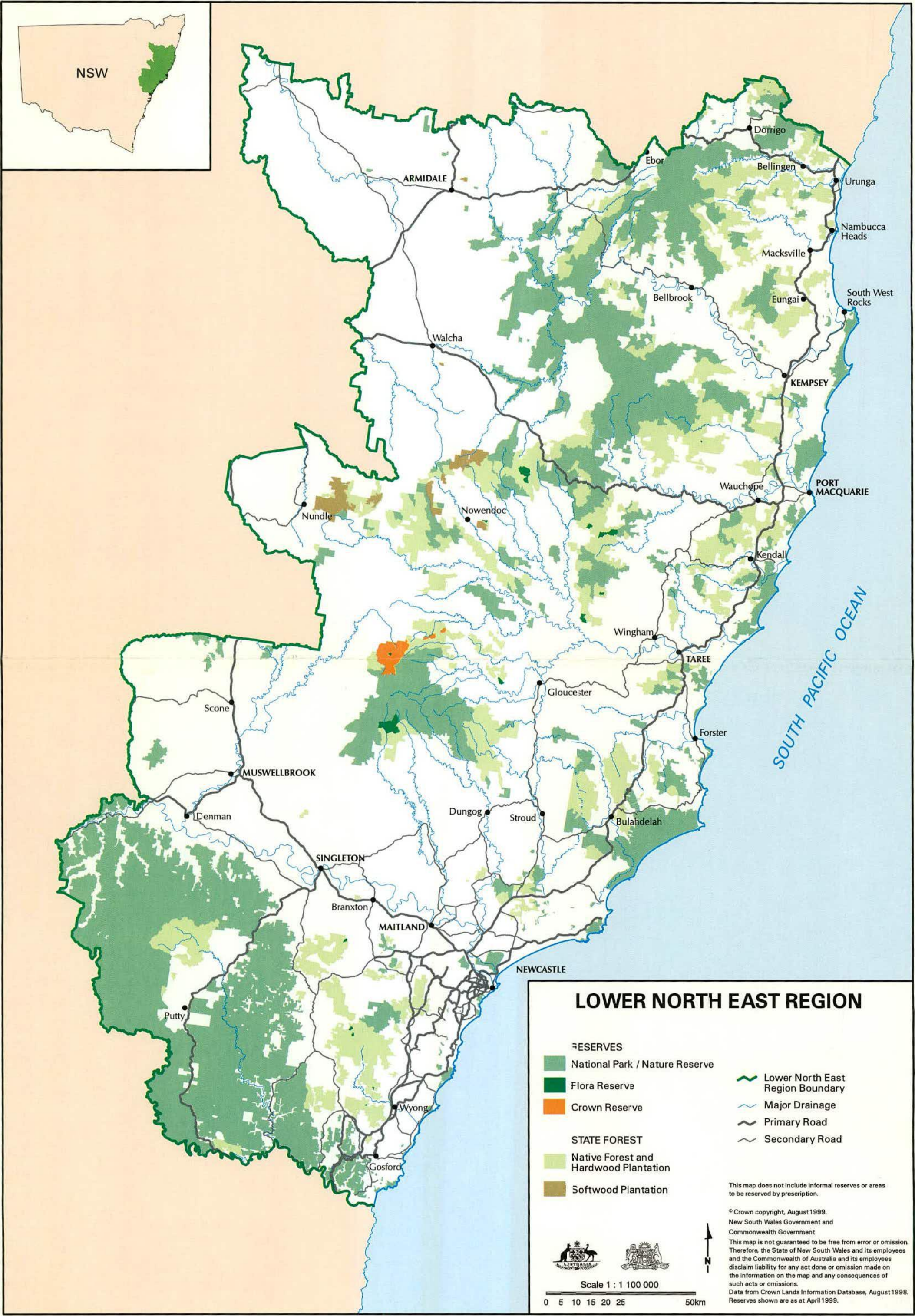
© Crown copyright, August 1999.  
New South Wales Government and Commonwealth Government  
This map is not guaranteed to be free from error or omission. Therefore, the State of New South Wales and its employees and the Commonwealth of Australia and its employees disclaim liability for any act done or omission made on the information on the map and any consequences of such acts or omissions.  
Data from Crown Lands Information Database, August 1998. Reserves shown are as at April 1999.



Scale 1 : 1 000 000

0 5 10 15 20 25 50km







## **Senator Meg Lees**

**Australian Democrats**

**Deputy Leader and Environment Spokesperson**

**September 23, 1997**

**MEDIA RELEASE**

**97/653**

### **HOWARD'S GREENHOUSE SCARE CAMPAIGN DRAGS UP FUZZY FORECAST FIGURES**

THE Prime Minister has taken his Government's greenhouse nonsense to dizzy new heights by using a model based on a \$900 per tonne carbon tax to scare the public, the Australian Democrats say.

Democrats Environment Spokesperson Senator Meg Lees said Mr Howard's forecast of 90,000 job losses from stabilising greenhouse gas emissions at 1990 levels was based on a highly flawed ABARE model, assuming a \$900 per tonne carbon tax.

"A \$900 a tonne carbon tax is so massive it would raise more than \$54 billion a year - or about \$60,000 for each of the jobs the Prime Minister claims would be lost," Senator Lees said.

"This assumed tax is about 10 times the rate the Industry Commission found would be necessary to cut greenhouse gas emissions to the even lower target of 20 per cent below the 1988 levels.

"Mr Howard may be the coal industry's number one lobbyist - but these latest claims are so ludicrous and extreme that they are likely to undermine our already shaky international standing on this issue.

"It's time for the Federal Government to start putting some balance into this debate and start giving Australia the true picture."

In Question Time today, Senator Lees accused Mr Howard of a shonky scare campaign and called on him to stop acting as lobbyist and start acting as leader on the greenhouse issue.

In a question to Senator Hill outlining her concerns on the ABARE models, Senator Lees said the Centre for Policy Studies had come up with models which showed a completely different picture to that painted by the Government.

The Centre's model showed that a different tax mix would cut greenhouse emissions by 12 per cent and increase employment by 55,000 jobs.

"This is the very centre that Senator Parer tells us refereed his Megabare report. Why does Mr Howard ignore their work?" Senator Lees said.

**To arrange comment contact Kelly Westell on (02) 6277 3765  
or phone Senator Lees on 0418 804 505.**

**AUSTRALIAN  
DEMOCRATS**



## Senator Meg Lees

### Australian Democrats

Deputy Leader and Environment Spokesperson

September 22, 1997

MEDIA RELEASE

97/650

## LABOR LINES UP WITH COALITION ON GREENHOUSE

THE Australian Democrats today used an urgency motion in the Senate to force the ALP to show its hand on greenhouse - and were disappointed and disturbed to see them side with the government and vote against binding greenhouse gas reduction targets.

Democrats Environment Spokesperson Senator Meg Lees blasted the "gross hypocrisy" of Labor.

"Today we've heard Kim Beazley and Senator Faulkner ridiculing the Prime Minister for his irresponsible, weak and selfish position on greenhouse - but they're happy to sidle up to him on that very issue," Senator Lees said.

"This is a bitter disappointment. No wonder the ALP have kept the Australian public guessing for so long. No wonder they've been so silent.

"The ALP's hypocrisy knows no bounds. Does this mean Mr Beazley, happy to howl down John Howard's embarrassing foray into the South Pacific, would have acted the same way? Would he, too, have waltzed in there, played the bully boy games and dragged greenhouse off the agenda?"

Senator Lees' debate during the matter of urgency motion highlighted the need for Australia to encourage jobs in renewable technologies and she warned that Australia risked international isolation with its current stance.

"We risk falling behind in a world which is seeing the need for sunrise technology," she said.

"We do have a lot of coal - but we also have a hell of a lot of sun.

"Until this Government starts to think outside its fossil fuel square and starts channelling subsidies into renewable technologies, we will be left out in the cold."

To arrange comment contact Kelly Westell (02) 6277 3765 or phone Senator Lees on 0418 804 505.

AUSTRALIAN  
**DEMOCRATS**





**Threatened  
Species  
Network**

PO Box 12046  
Elizabeth St.  
Brisbane, 4002  
Ph. 07 32210573  
Fax 07 32297992

23.9.97

Dear friends,

**re: Coxen's Fig Parrot search**

Due to Commonwealth delays in funding we've had to postpone the search until November (22nd-29th).

thank you for your earlier support in publicising the Coxen's Fig parrot search which was scheduled for early October. We have had a good response which is heartening. This postponement has affected our recruitment efforts and of course people who were unable to participate in October may be available in November!

So, may I once again request your assistance in alerting your members to this important search effort in which they can be involved.

I have include some additional information which you may find useful for your newsletter and/or which you may wish to circulate.

Many thanks

Yours sincerely

Maria VanderGragt  
Coordinator  
Threatened Species Network (Qld)



## **Searching for Coxen's Fig Parrots**

The Coxen's Fig Parrot is critically endangered. It is one of seven Australian birds at immediate risk of extinction. Historical records show that it was numerous in sub-tropical rainforests between the Mary and Richmond Rivers and may have occurred as far north as Bundaberg and south to the Port Macquarie hinterland. The more recent reported sightings centre on the ranges around the Qld/NSW border. Unfortunately, the exact whereabouts of populations of these most endangered birds remains uncertain. However recent work to identify potential habitat in Northern New South Wales has provided a basis for a large scale and targeted search effort.

## **Urgent: Search Help Needed**

Keen volunteers can help make a substantial contribution to the search effort this spring. Searches will be conducted in Northern New South Wales at Mebbin State forest sites near Mt. Warning and the Cambridge Plateau and Tooloom Scrub west of Kyogle.

Volunteers will monitor fig trees for Coxen's Fig Parrots and document other visiting frugivorous bird species from 22 - 29 of November. A base-camp will be set up and food will be provided. Anyone interested in taking part in the search can call Maria VanderGragt from the Threatened Species Network on (07) 32210573.



# Coxen's Fig-Parrot

Community Survey, November 1997

Mebbin  
Cambridge  
Tooloom



**COXEN'S FIG-PARROT RECOVERY TEAM**

**BIRDS AUSTRALIA**

**THREATENED SPECIES NETWORK**

**NSW NATIONAL PARKS AND WILDLIFE SERVICE**



**Birds Australia**



Version 1: 23 September 1997





## **BACKGROUND:**

Coxen's Fig-Parrot is recognised as one of Australia's rarest and least known birds. Although its northern relatives are relatively common, Coxen's Fig-Parrot has, in recent years, only rarely been reported from its south-east Queensland and north-east New South Wales range.

Literature reviews indicate that Coxen's Fig-Parrot feeds predominantly on a variety of fig tree species and may exhibit altitudinal movements in response to the fruiting phenology of these species. Studies of breeding habits between August and December in this and related subspecies suggest that Coxen's Fig-Parrot may prefer ecotonal boundaries between dry, sub-tropical or littoral rainforest and more open areas, and that relatively small home ranges are occupied during this time.

The paucity of recent plausible sightings, less than 20 in the last ten years, has led to concern about the subspecies' long term viability. There have been recommendations that a captive breeding program be implemented, with the aim of releasing birds back into the wild. However, insufficient information is known about the ecology and population levels of the subspecies to allow implementation of this proposal, and the nest and eggs of the bird are yet to be formally described.

A Recovery Team was formed in 1993 at the initiative of the then Queensland Dept. of Environment and Heritage, under the guidance of the Commonwealth Endangered Species Program administered and funded by the then Australian Nature Conservation Agency. The NSW National Parks and Wildlife Service (NPWS) is represented on the Recovery Team which is continuing to identify and map critical habitat.

In 1996, the Recovery Team contracted a botanist to map and identify the fig trees occurring around the locations of the 14 most recent and reliable observations of Coxen's Fig-Parrot in NSW. At the seven top priority sites, all fig trees have been individually located, identified and tagged within an area of approximately 20 hectares surrounding the observation point.

## **AIM:**

Effective conservation action is hampered by a lack of knowledge of the bird, its whereabouts and ecological requirements. This community survey aims to make a significant contribution towards knowledge of all three things by placing as many observers as possible into the field in the vicinity of the tagged trees at three of the top priority sites, namely Mebbin State Forest, Cambridge Plateau and Tooloom Scrub.

It is also intended to collect opportunistic information about other threatened rainforest species, including the pigeons, large owls and mammals, on a voluntary basis where time permits.



## ITINERARY:

### Saturday 22 November 1997.

- 9.00am. Observers to meet at the Dept. of Agriculture Tropical Fruit Conference Centre, 3km east of Alstonville along Bruxner Highway on the north side.
- 9.30am. Lecture about fig-parrots. Search methodology and SAR procedures.
- 11.30am. Morning Tea.
- 12.00pm. Allocate observers to search areas. Area coordinators allocate people to "A" and "B" teams and to individual trees, circulate survey forms, direction maps, tree maps, etc.
- 1.30pm. Lunch
- 2.00pm. Travel to base camps and set up. Catering provided at each camp.

### Sunday 23 November to Tuesday 25 November.

TIME:	INDIVIDUAL TREES	ROAM AND RELAX
5.30am.		Breakfast.
6.30am.	"A" team.	"B" team
9.30am.		Morning tea.
10.00am.	"B" team	"A" team
1.00pm.		Lunch.
2.00pm.	"A" team	"B" team
4.00pm.		Afternoon Tea.
4.30pm.	"B" team	"A" team
6.30pm.		Dinner.
8.00pm.		Daily debrief.

### Wednesday 26 November.

Rest day and travel to alternative area. Set up camp.  
Coordinators to meet and review progress, amend methods etc.

- 4.00pm. Mid-survey briefing by each area coordinator on site.

### Thursday 27 November to Friday 28 November.

As Above.

### Saturday 29 November.

Pack up.

- 11.00am. Group debrief at Dept. of Agriculture Tropical Fruit Conference Centre.
- 1.00pm. Formal lunch at Alstonville Hotel.

Depart.



## **NOTES:**

- Catering will be provided for all meals whilst at base camps.
- Bring your own personals, tent, sleeping bag etc.
- Ensure you have a compass, whistle and torch, first aid kit and day pack/water bottle/matches. Photocopied maps will be provided.
- Bring a pillow, groundsheet, mossie cream etc. to lie on forest floor and make the tree surveys more comfortable.
- All participants will be required to register at the Alstonville briefing and to report to the area coordinators at each shift change. It is very easy to get lost in rainforest.
- Each base camp will have a mobile phone and radio link-up to the NPWS Alstonville or Kyogle District Office.

## **CONTACTS:**

For further information and to register please contact one of the following:

### Mebbin

Bob Moffatt, Area Coordinator.	NPWS Alstonville	066-281177
--------------------------------	------------------	------------

### Tooloom

Dave Charley, Area Coordinator.	NPWS Kyogle	066-321473
---------------------------------	-------------	------------

### Cambridge

Maria VanderGragt, Area Coordinator. Threatened Species Network.	07-32210573
--	-------------

John Martindale, Survey Leader.	NPWS Coffs Harbour	066-598233
---------------------------------	--------------------	------------

Birds Australia:	Mick Fendley	03-98822622
	Northern NSW Group. Andrew Ley	067-725358

## **REGISTRATION DEADLINE:**

Monday 17 November 1997.



# **Enviro – Stop Press**

**North Coast Environment Council Update 16<sup>th</sup> September 1997**

Terry Parkhouse & Lisa Young

Fax-Phone 02 65690802

Email: [ncecsr@nor.com.au](mailto:ncecsr@nor.com.au)

## **Correspondence:**

8.8.97 NCEC : To Heritage Council NSW . Requesting an interim Conservation Order to protect North Ocean Shores.

August 97 NCEC : To Pantagonia for grant to employ three people to resource information on some forest reserves. Total \$4500.

6.9.97 To Prime Minister from NCEC regarding Tasmanian Forests. Urgent protection the Tarkine, Great Western Tiers and Southern Forests from the push to woodchip.

13.9.97 : To DVA and Minister for Urban Affairs and Planning from NCEC regarding The Scotts Head Development Urging the appropriate zoning to protect sensitive area from development.

6.9.97: To Pam Allen Minister for the Environment from NCEC regarding Protection of the Environment Operations Bill.

13.9.97 To Director General NPWS from NCEC regarding proposed development of Perisher Valley opposing any further development.

6.9.97: To Premier Bob Carr from NCEC regards urging a need to recommit to completing the comprehensive regional assessments.



## **REPORTS**

\*Environmental and Heritage Technical Report by Simon Clarke 15<sup>th</sup>  
August 1997

\*Western Forest Officer Report

\*Various Reports to the Forest Forum.

## **SUBMISSIONS**

8.9.97 :To NSW .EPA from NCEC Public Inquiry into Sewerage  
Management in Coastal Zone.  
Agreeing to the general thrust of the recommendations.

Aug 97 : To Joint Select Committee on the Threatened Species Conservation  
Act from EDO NSW.

September : Submission to NPWS from NCEC regarding Draft Public  
Access Strategy.

## **MEETINGS AND CONFERENCES**

Public Access Forum 4WD Access to National Parks  
8<sup>th</sup> October 1997 Coffs Harbour at the Norm Jordan Hall, Showgrounds  
6-9pm.

Conference : Centre for the Environmental Philosophy Planning and Design  
Catalyst 97 5<sup>th</sup> December to the 8<sup>th</sup> Canberra.

## **MINUTES**

Forest Countdown Campaign Meeting September 1.9.97

Minutes of the Forest Summit 17.8.97 & 18.8.97



## **MEDIA**

Media release from Kym Yeadon regards State waterways: For more information refer to Window on Water report. Helen Daley Water quality services unit DLWC (02) 9857459

## **PUBLICATIONS**

Aug 97 Eco Watch

Aug/Sept 97 Environs

Spring 1997 –Waves

29.8.97 Forest Bulletin

18.8.97 EDO Bulletin

16.8.97 EDO Bulletin

Newsletter Scotts Head Protection Group Sept 97



## FORESTRY RESTRUCTURING AND NATURE CONSERVATION AMENDMENT BILL QUESTIONS FROM CROSS BENCH MEMBERS

### Background:

At the meeting of the Crossbenchers on 20 September 1999 the following questions were asked:

1. to provide details of NSW Government's commitments and expenditure for Forest Industry Structural Adjustment Program (FISAP);
2. to provide details of expenditure on business exit assistance for lorry owners/drivers;
3. whether the administration of the FISAP had been audited;
4. how the Government intend to expend the additional \$20 million committed to FISAP under the Forestry Restructuring and Nature Conservation Amendment Bill.

### Question 1:

In 1995 the NSW and Commonwealth Governments initiated the \$120 million Forest Industry Structural Adjustment Package (FISAP) to assist structural adjustment in the native timber industry arising from changes in the resource base available to the NSW native timber industry. In essence, the NSW contribution to FISAP supports displaced workers in training for new jobs and funds businesses to improve value adding and create new jobs.

Under the Memorandum of Understanding developed at that time, NSW funds Worker Assistance, Industry Development Assistance and Business Exit Assistance for Lorry Owner-Drivers, while the Commonwealth Government funds Industry Development Assistance interest subsidy payments and Business Exit Assistance for businesses other than those defined as Lorry Owner-Drivers.

Since the inception of the FISAP to 30 June 1999, the NSW Government has committed:

- \$20 million under Worker Assistance to assist 494 displaced timber workers;
- \$14.1 million in grant funding under Industry Development Assistance. In addition \$1.2 million in interest subsidies have been approved. This totals \$15.4 million in Industry Development Assistance to 26 businesses, resulting in the creation of 170 new direct jobs and \$50.5M in investment in the industry;
- \$2.28 million under Business Exit Assistance for Lorry Owner Drivers;
- \$13.5 million for industry restructuring arising from the North East Forest Agreement;
- \$7.12 million for industry restructuring projects arising from the Eden Forest Agreement; and
- \$1.6 million in relation to 25 training initiatives funded under the NSW Forest Industry Training Strategy.

All NSW funds have been committed under FISAP to assist in the restructure of the native timber industry. Of this, \$29 million has been actually expended as at 30 June 1999. Actual expenditure to date of funds is significantly less than the amount committed due to the fact that funds are paid against milestones which may be spread over many years in the case of Industry Development Assistance.